




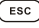





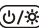


# KCombo-7 and KP-708 Quick Start Manual

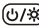


This manual is applied to KCombo-7 and KP-708

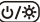
-  Plotter function: Moving the cursor upward or to change the setting.  
Sounder function: Moving the VRM upward.
-  Plotter function: Move cursor to the left.  
Sounder function:  
Long Press - Activate SHIFT range function  
Short Press - activate the echoes history marker.
-  Plotter function: Moving the cursor to the right.  
Sounder function:  
Long Press - Activate feeding rate selection for picture advancement.  
Short Press - activate the echoes history marker.
-  Pressing it once displays the menu of the current page, pressing it twice enters the main menu.  
Plotter function : to turn track on/off  
Plotter + Sounder Function:  
Long press - Activates split ratio selection.  
Short Press - Displays the menu of the screen that has >50% screen coverage.
-  Display the nine main screens circularly, turn over the listed interfaces.  
Plotter Function: Long press to change track color.  
Sounder Function: Long press to activate sonar mode selection.
-  Withdraw from an optional operation, or display the previous page in reverse-cycle order.  
Long press: to activate graphic mode selection function.

-  Confirms the input or data.  
Plotter function: Long Press - Activates Drawing Mark option.  
Short Press - Activates waypoint attribute edit window.  
Sounder function:  
Long Press - To switch from manual gain to automatic gain and vice versa.  
Short Press - To adjust gain level.
-  Plotter and AIS Function: Enlarges the scale of the maps and charts.  
Sounder Function: Short Press - Decreases the depth range for shallow waters.  
Long Press - To switch between Manual and Auto range function.
-  Plotter and AIS Function: Reduces the scale of the maps and charts.  
Sounder Function: Short Press - Increases the depth range for deeper waters.  
Long Press - To switch between Manual and Auto range function.
-  Plotter function: Display other functions (GOTO, tide table, search, etc.) menu.  
Sounder function: Provides signal level selection. Eliminates low intensity echoes (up to light-blue echoes) each level.
-  The MOB mark denotes man overboard position.
-  Long Press - Turn the power ON/OFF.  
Short Press - Adjust the screen brightness and control panel dim.

## Turning ON and OFF Power

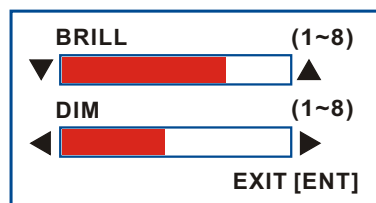
Turning on the power by press  key, the unit beeps and displays the "ONWA" logo. Wait for the unit totally boot up to show the below warning page and press [ENT] to enter working mode.



Turning off the power by press and hold  until the screen goes off.

## Adjusting Brilliance and Dimmer

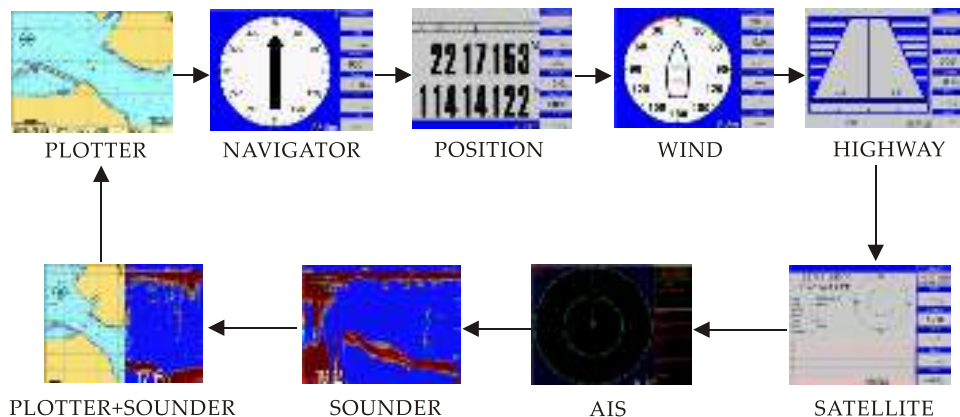
1. Press the [☺/☼] key. The adjusting window appears.



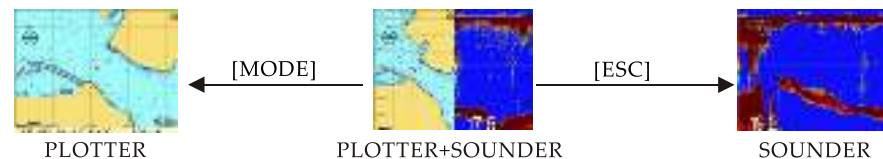
2. Press [▲] or [▼] to adjust LCD display brightness.
3. Press [▶] or [◀] to adjust keypad backlight.
4. Press the [ESC] key to confirm and exit.

## How to select display mode

Selecting display modes by [MODE] and [ESC] key. Your unit has Nine display modes : PLOTTER, NAVIGATOR, POSITION, WIND, HIGHWAY, SATELLITE, AIS, SOUNDER, SOUNDER + PLOTTER.



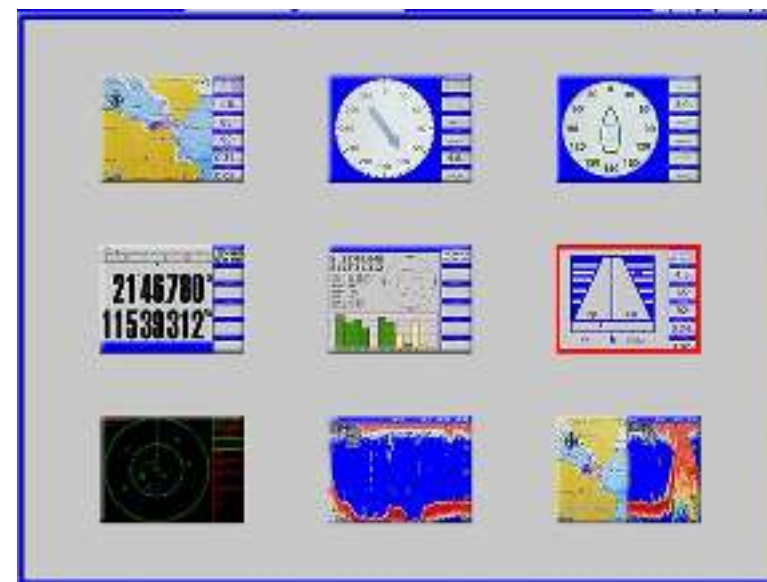
Press the [MODE] key to choose a display mode. Each time the key is pressed, the display mode changes in the sequence shown above. You can also press [ESC] key to choose a display mode in reverse sequence shown above. Example 1, if you are in PLOTTER + SOUNDER mode when you press [MODE] key the screen will go to PLOTTER mode.



Example 2, if you are in PLOTTER + SOUNDER mode when you press [ESC] key the screen will go to SOUNDER mode.

## Selecting display mode by Icons

When you long press [ESC] in any display mode an Icon selection window will appear as below.



You can use arrow keys to choose a display mode and press [ENT] to enter that display mode.

**Note : If some display modes cannot be selected (the Icon turns to grey color) please check SETUP menu whether this display mode is turned off.**

For more detail please download the full manual from <http://www.onwamarine.com>

Please consider the environment before printing the manual